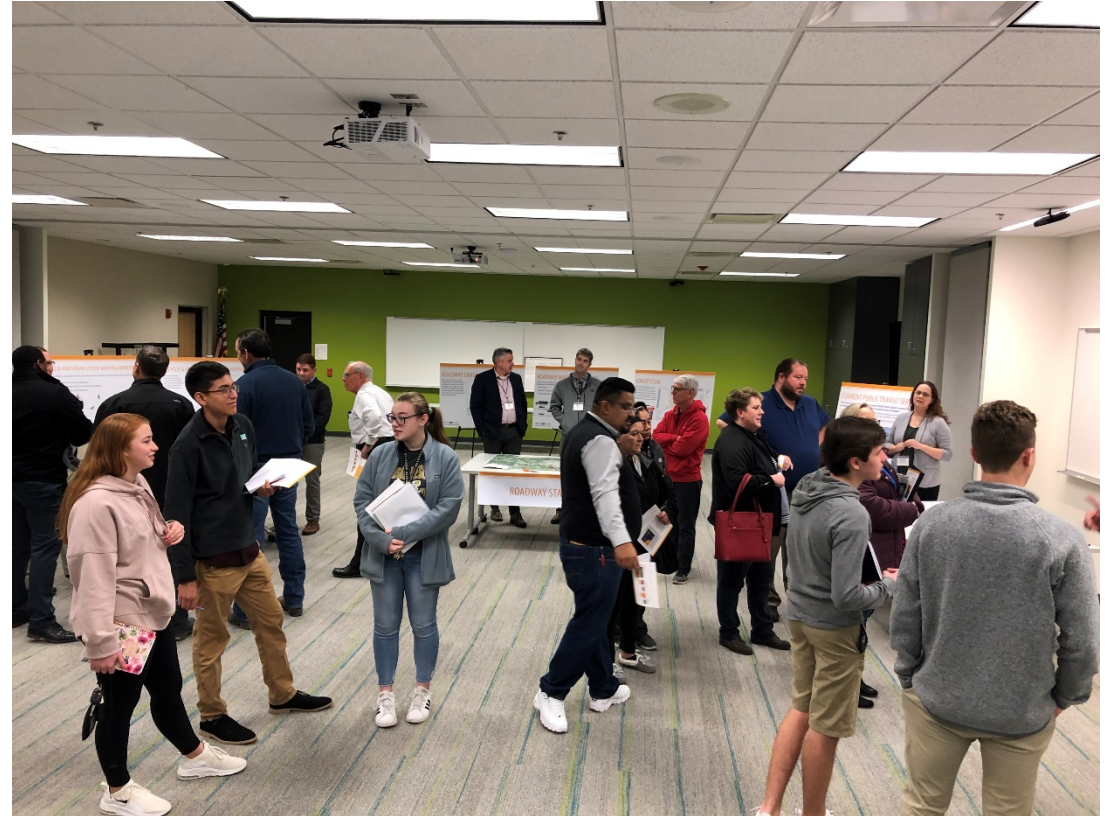


2045 Long Range Transportation Plan Public Meeting November 12, 2020

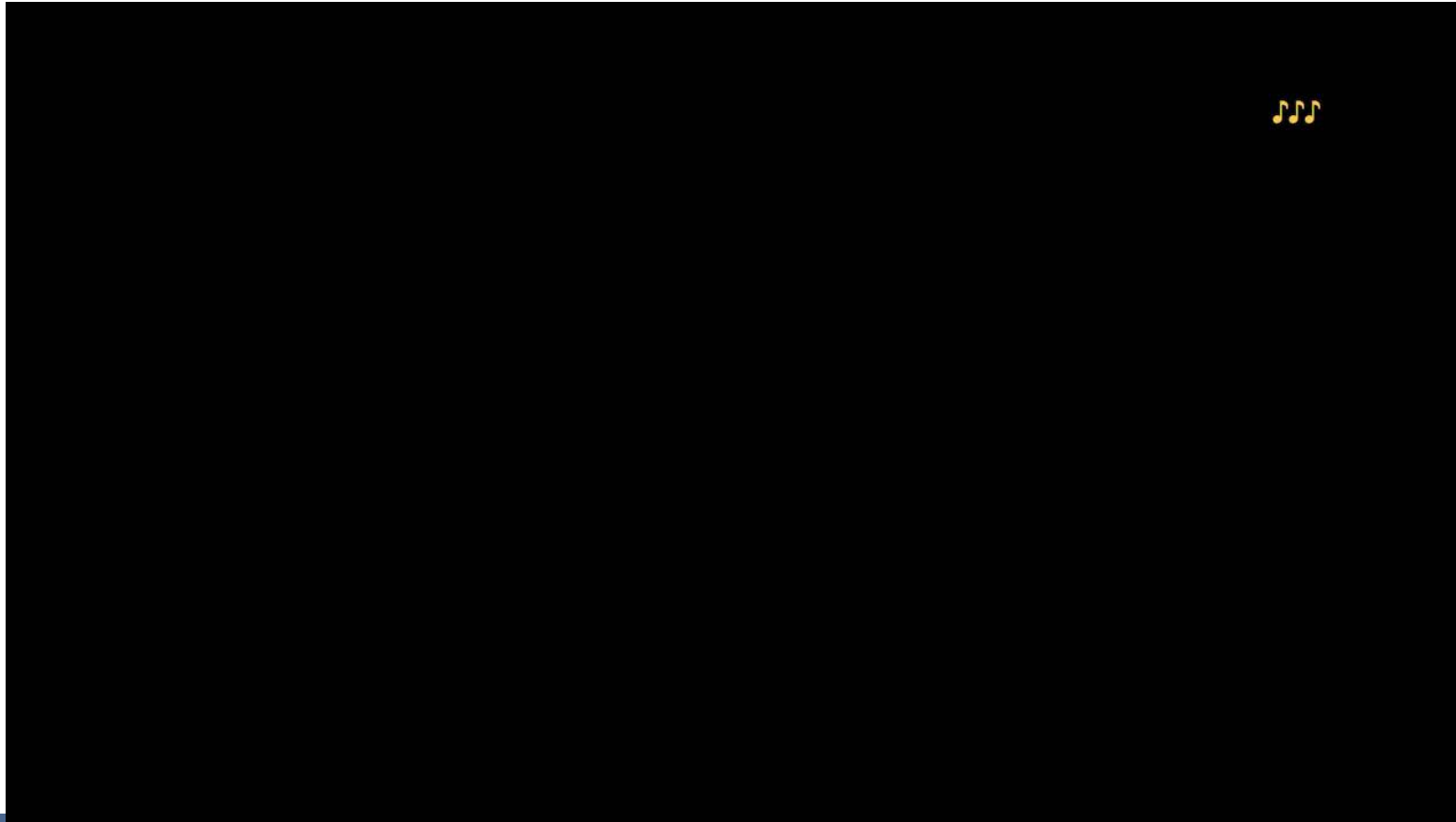


Meeting Purpose







- Brief Overview of LRTP Process.
- Provide Preview of Draft LRTP Projects
- Provide Opportunity for Public Comment



About the 2045 LRTP



Goals of the 2045 LRTP

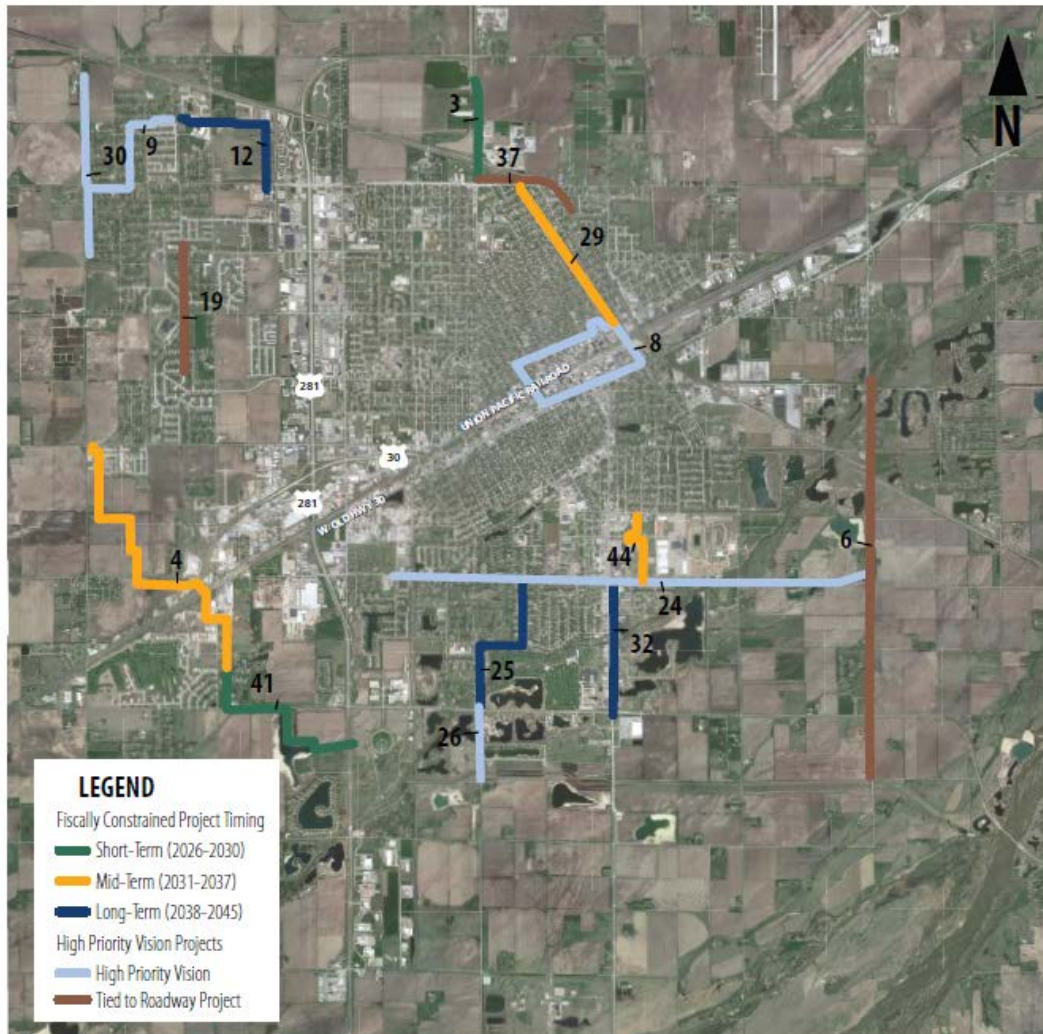
-  Improve system safety
-  Increase multi-modal connectivity and accessibility
-  Promote economic vitality
-  Preserve the existing transportation system
-  Enhance the environment and system resiliency
-  Maintain traffic operations and system reliability

Roadway Projects



Time Frame	Project ID	Improvement Type	Project Location + Description
Short-Term (2026-2030)	4	New Corridor	Claude Rd, Faidley to State: Extension as a 3-lane with roundabout at intersections with 13th and State.
	7	Grade Separation	Broadwell Ave at UP railroad: Broadwell / UPRR grade separation.
	9	Reconstruction and Intersection Improvement	Locust St, Walnut to Fonner Park: Reconstruct Locust with improved access management, potential signal communications and cabinet upgrades.
	10	Access Management	State St west of US 281: Medians for access control at Diers and Driveways. Coordinate with Claude Ave Extension, provide roundabout at Claude / State.
	11	Access Management	13th St west of US 281: Medians for access control at Diers and Driveways. Coordinate with Claude Ave Extension, provide roundabout at Claude / 13th. Improve pedestrian crossing access and markings.
	12	Access Management	Faidley Ave west of US 281: Medians for access control at Diers and Driveways. Coordinate with Claude Ave Extension, provide roundabout at Claude / Faidley. Improve pedestrian crossing access and markings.
Mid-Term (2031-2037)	1	Intersection Improvements	US 281, US 34 to Capital Ave: Intersection geometric improvements, turn lane adjustments, potential communications and signal upgrades.
	16a	Reconstruct and Widen	Capital Ave, Broadwell to St Paul: Reconstruct as 3-Lane Urban Section.
	22	Reconstruct and Widen	State St, Lafayette to Broadwell: 3-lane section for State St between Broadwell and Lafayette. Geometric consistency and improved school safety. Likely part of street reconstruction.
Long-Term (2038-2045)	2	Widen	13th St, North Ave to Independence Ave: Reconstruct as 3-lane Urban Section with a roundabout at the intersection of Independence and 13th St.
	25	Reconstruct and Widen	Old Potash, Engelman to North: Reconstruct as 3-Lane Urban Section.
	27	Reconstruct and Widen	Stolley Park Road widening to 3 lanes, Kingswood Dr and Stuhr Rd: Reconstruct as 3-Lane Urban Section.
High Priority Vision Projects	16b	Reconstruct and Widen	Capital Ave, St Paul to Sky Park: Reconstruct as 3-Lane Urban Section.
	23	New Expressway	East Bypass: Construct new expressway on east fringe of Grand Island. Included as a planning / design study in Build Nebraska Act.
	24	Reconstruct and Widen	Capital Ave, Engelman to North: Reconstruct as 3-Lane Urban Section.

Bicycle & Pedestrian Projects



Time Frame	Project ID	Improvement Type	Project Location + Description
Short-Term (2026-2030)	3	Trail	Capital Ave Trail to Eagle Scout Park Connection
	41	Trail	Trail between Cedar Hills Park and the new medical center, Stuhr Trail and Riverway Trail.
Mid-Term (2031-2037)	4	Trail	Connection between Shoemaker Trail and Cedar Hills Park.
	44	Trail	State Fair Boulevard / Bellwood Drive Trails
	29	On Street Bike Boulevard	Oak Street Bike Boulevard
Long-Term (2038-2045)	12	Trail	NW High School to State Street Trail Connection
	25	Trail	Stolley Park to LE Ray Park Trail
	32	Trail	South Locust Street Trails
High Priority Vision Projects	8	Curb Extensions	Downtown curb extensions with major redevelopment projects
	9	Trail	Independence to Northwest High Trail
	24	Trail	Stolley Park Trail
	26	Trail	LE Ray to Riverway Trail Connection via Blaine Ave
	30	Trail	Independence Avenue Trails
Bicycle and Pedestrian Projects Funded by Roadway Projects	6	Trail	Riverway Trail to Stuhr Rd Connection
	19	Trail	Claude Avenue Trail
	37	Trail	Capital Avenue Trails

Transit Projects

Continued Replacement and Maintenance of Transit Vehicles

- This project would continue operations and maintenance of the current bus fleet, and continue vehicle replacements as older vehicles reach the end of their serviceable life.



Transit Projects

New Transit Operations Building

- This project would create a transit operations building for the Grand Island area's transit service provider, Central Ride Agency of Nebraska (CRANE). The building will improve transit operations and preventative maintenance, and improve communications and route planning for the system.



Transit Projects

Enhancements to Transit Service

- This project would potentially expand the services offered by CRANE to include options such as limited fixed route or flexible fixed route services. Other service expansions might include longer hours of operations.



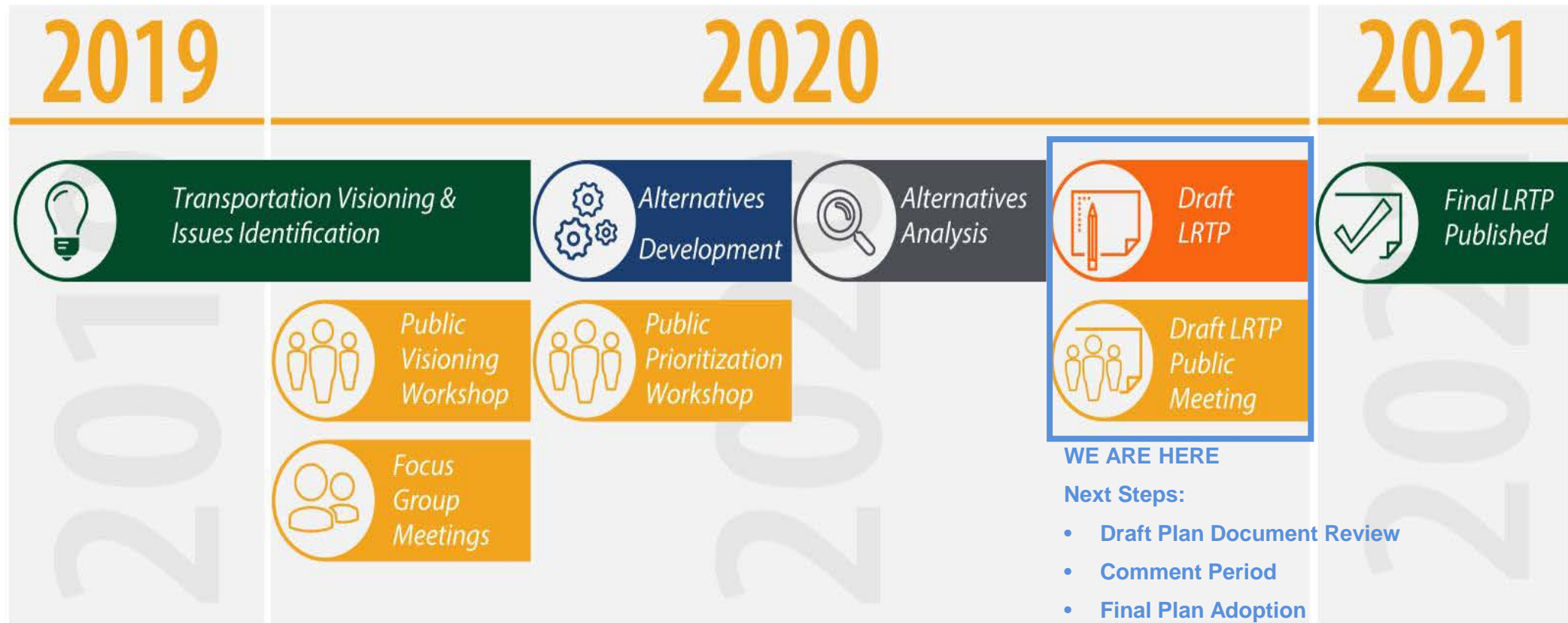
Transit Projects

Updated Transit Development Plan

- This study would help chart the coming five years of transit operations and planning for the CRANE Transit System. Anticipated for 2021-2022.



2045 LRTP Schedule



www.GI2045.COM

Check out our website to stay up-to-date on the 2045 LRTP!