

2045 LONG RANGE TRANSPORTATION PLAN

Welcome

Thank you for joining us at today's public meeting! Your input and participation is important to developing a well-rounded 2045 Long Range Transportation Plan (LRTP) that you, your friends and family help shape and see implemented in the future.

What is the 2045 LRTP?

The 2045 LRTP is a 25-year plan that will guide transportation system decision-making for the Grand Island area and provide a list of transportation projects that meet future transportation needs in the region. The LRTP is developed through public input and a technical analysis of how all modes of transportation perform including highways, roads, transit, freight, bicycle and pedestrian facilities. The Grand Island Area Metropolitan Planning Organization (GIAMPO) not only analyzes how the system operates today, but also forecasts conditions for the next 25 years. The final 2045 LRTP will include strategies and a prioritized list of projects based on anticipated funding, the results of technical analyses and community preferences of Grand Island area residents.

How did we get here?

The proposed project list for the 2045 LRTP was developed through a combination of public feedback and technical analyses. GIAMPO has already conducted and performed technical analyses for all modes of travel.

In addition to the technical analyses, public feedback guided GIAMPO in selecting proposed projects for the 2045 LRTP. In February 2020, GIAMPO hosted a series of Focus Groups and a Public Visioning Workshop to solicit feedback from Grand Island area residents on transportation safety and operational issues, opportunities for increased and/or improved streets, transit, bicycle, and pedestrian connectivity, and ideas for transportation projects they would like to see implemented.

The workshop, along with an online survey for those who could not attend the in-person workshop, helped GIAMPO define goals and priorities for the 2045 LRTP, which are:



Improve system safety



Increase multi-modal connectivity and accessibility



Promote economic vitality



Preserve the existing transportation system



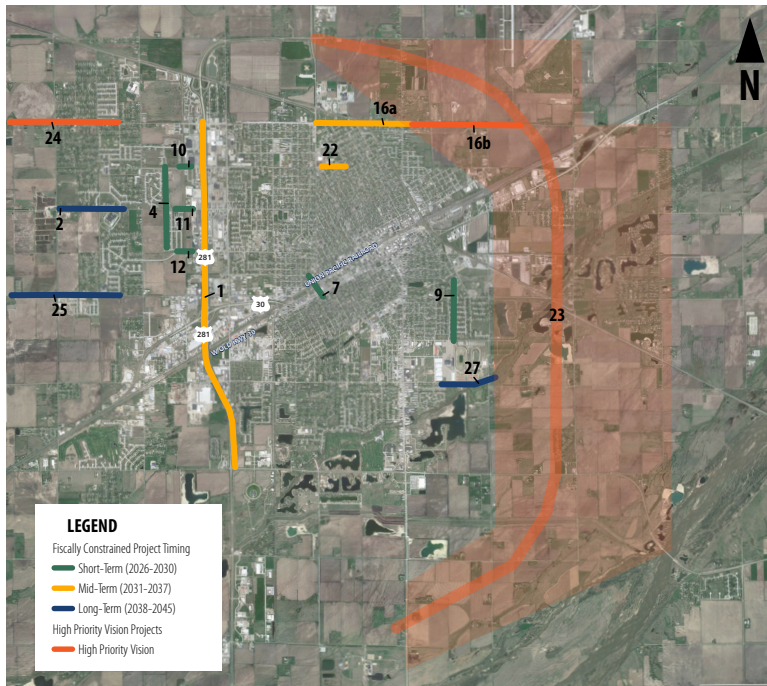
Enhance the environment and system resiliency



Maintain traffic operations and system reliability

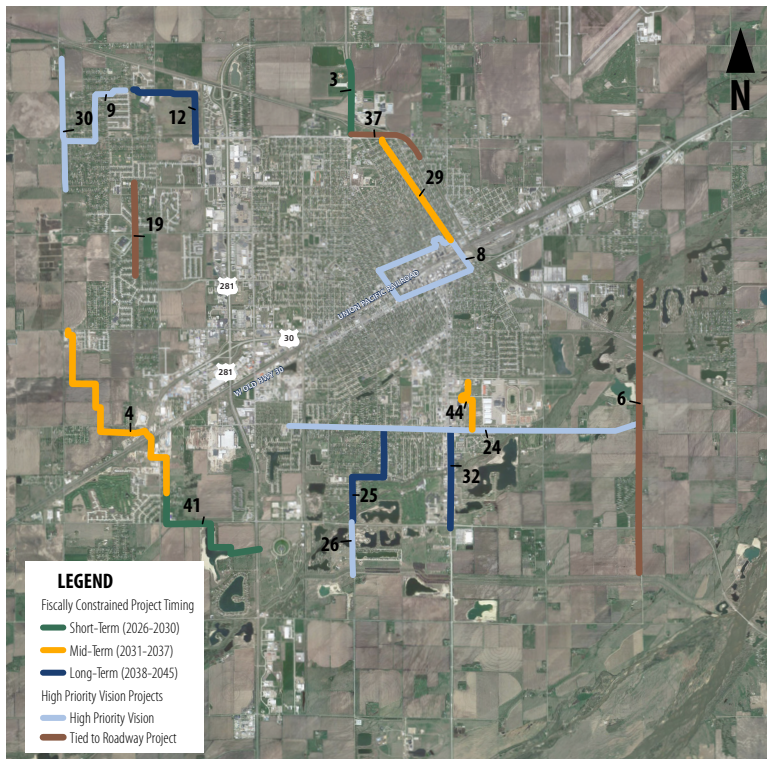
In June 2020, GIAMPO hosted a brief online public meeting, which asked residents for feedback on potential future multi-modal transportation strategies and alternatives that might be included in the plan. The results from this input opportunity helped GIAMPO further refine its proposed project list for the draft plan, which you can find on the next page.

ROADWAY PROJECTS



Time Frame	Project ID	Improvement Type	Project Location + Description
Short-term (2026-2030)	4	New Corridor	Claude Rd, Fairley to State: Extension as a 3-lane with roundabout at intersections with 13th and State.
	7	Grade Separation	Broadwell Ave at UP railroad: Broadwell / UPRR grade separation.
	9	Reconstruction and Intersection Improvement	Locust St, Walnut to Fonner Park: Reconstruct Locust with improved access management, potential signal communications and cabinet upgrades.
	10	Access Management	State St west of US 281: Medians for access control at Diers and Driveways. Coordinate with Claude Ave Extension, provide roundabout at Claude / State.
	11	Access Management	13th St west of US 281: Medians for access control at Diers and Driveways. Coordinate with Claude Ave Extension, provide roundabout at Claude / 13th. Improve pedestrian crossing access and markings.
	12	Access Management	Fairley Ave west of US 281: Medians for access control at Diers and Driveways. Coordinate with Claude Ave Extension, provide roundabout at Claude / Fairley. Improve pedestrian crossing access and markings.
Mid-Term (2031-2037)	1	Intersection Improvements	US 281, US 34 to Capital Ave: Intersection geometric improvements, turn lane adjustments, potential communications and signal upgrades.
	16a	Reconstruct and Widen	Capital Ave, Broadwell to St Paul: Reconstruct as 3-Lane Urban Section.
	22	Reconstruct and Widen	State St, Lafayette to Broadwell: 3-lane section for State St between Broadwell and Lafayette. Geometric consistency and improved school safety. Likely part of street reconstruction.
Long-Term (2038-2045)	2	Widen	13th St, North Ave to Independence Ave: Reconstruct as 3-lane Urban Section with a roundabout at the intersection of Independence and 13th St.
	25	Reconstruct and Widen	Old Potash, Engelman to North: Reconstruct as 3-Lane Urban Section.
	27	Reconstruct and Widen	Stolley Park Road widening to 3 lanes, Kingswood Dr and Stuhr Rd: Reconstruct as 3-Lane Urban Section.
High Priority Vision Projects	16b	Reconstruct and Widen	Capital Ave, St Paul to Sky Park: Reconstruct as 3-Lane Urban Section.
	23	New Expressway	East Bypass: Construct new expressway on east fringe of Grand Island. Included as a planning / design study in Build Nebraska Act.
	24	Reconstruct and Widen	Capital Ave, Engelman to North: Reconstruct as 3-Lane Urban Section.

BICYCLE & PEDESTRIAN PROJECTS



Time Frame	Project ID	Improvement Type	Project Location + Description
Short-Term (2026-2030)	3	Trail	Capital Ave Trail to Eagle Scout Park Connection
	41	Trail	Trail between Cedar Hills Park and the new medical center, Stuhr Trail and Riverway Trail.
Mid-Term (2031-2037)	4	Trail	Connection between Shoemaker Trail and Cedar Hills Park.
	44	Trail	State Fair Boulevard / Bellwood Drive Trails
	29	On Street Bike Boulevard	Oak Street Bike Boulevard
Long-Term (2038-2045)	12	Trail	NW High School to State Street Trail Connection
	25	Trail	Stolley Park to LE Ray Park Trail
	32	Trail	South Locust Street Trails
High Priority Vision Projects	8	Curb Extensions	Downtown curb extensions with major redevelopment projects
	9	Trail	Independence to Northwest High Trail
	24	Trail	Stolley Park Trail
	26	Trail	LE Ray to Riverway Trail Connection via Blaine Ave
	30	Trail	Independence Avenue Trails
Bicycle and Pedestrian Projects Funded by Roadway Projects	6	Trail	Riverway Trail to Stuhr Rd Connection
	19	Trail	Claude Avenue Trail
	37	Trail	Capital Avenue Trails

TRANSIT PROJECTS

Continued Replacement and Maintenance of Transit Vehicles

- This project would continue operations and maintenance of the current bus fleet, and continue vehicle replacements as older vehicles reach the end of their serviceable life.

New Transit Operations Building

- This project would create a transit operations building for the Grand Island area's transit service provider, Central Ride Agency of Nebraska (CRANE). The building will improve transit operations and preventative maintenance, and improve communications and route planning for the system.

Enhancements to Transit Service

- This project would potentially expand the services offered by CRANE to include options such as limited fixed route or flexible fixed route services. Other service expansions might include longer hours of operations.

Updated Transit Development Plan

- This study would help chart the coming five years of transit operations and planning for the CRANE Transit System. Anticipated for 2021-2022.

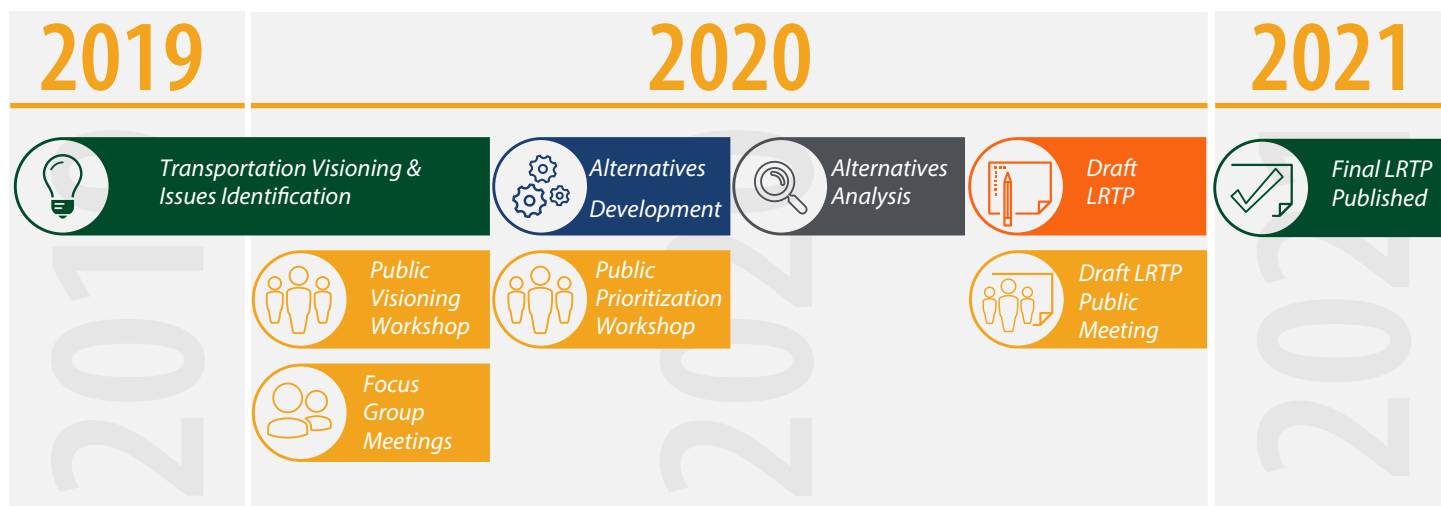


HOW DOES TRANSPORTATION FUNDING WORK?

Funding for the maintenance and growth of the transportation system in the Grand Island area, and across Nebraska and the United States generally, comes from a variety of sources. These sources include Federal government, State of Nebraska funds, and local funds from city and county government. Each of these funding sources pays for different aspects of the transportation system. This funding is limited, and transportation planning organizations like GIAMPO and their member jurisdictions need to carefully consider which potential transportation investments best fit with the needs of the Grand Island area.

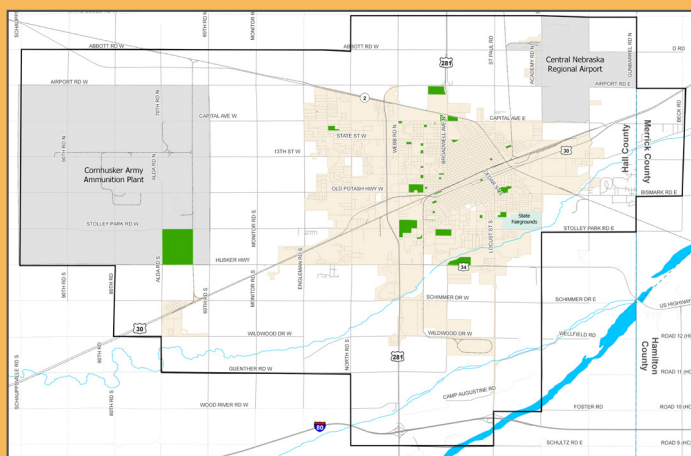
2045 LRTP Development Schedule

We are in the last phases of developing the 2045 LRTP. The Final LRTP will be published in early 2021!



What is an MPO?

Federal law requires that any Urbanized Area with a population over 50,000 people to have a Metropolitan Planning Organization (MPO) that carries out multi-modal transportation planning (like an LRTP). The Grand Island Urbanized Area officially exceeded this population threshold in the 2010 Census. In 2013, the Governor of Nebraska designated the Grand Island Area Metropolitan Planning Organization (GIAMPO) as the official MPO that serves as the formal transportation planning body for the greater Grand Island, Nebraska metropolitan area. The GIAMPO is the first MPO designated by the State of Nebraska in over three decades.



STAY UP-TO-DATE

Visit www.GI2045.com to stay up-to-date with the 2045 LRTP, review materials from today's meeting, or provide your feedback on the draft plan project list. Feedback can also be submitted to:

Andy Gomez, GIAMPO

100 East First Street, Grand Island, NE, 68801
AndyG@grand-island.com | 308-389-0273

Comments will be collected through Saturday, December 12, 2020.

